

# TRANSFORMING INDOORS & OUTDOORS TRANSFORMING LIFESTYLES

Follow us in Instagram

[instagram.com/designerhomeandlandscapes](https://www.instagram.com/designerhomeandlandscapes)



 **DESIGNER**  
HOME & LANDSCAPES









## CONTENT

About Us .....	04
Mission & Vision .....	05
Brand & Quality .....	06-07
Bathrooms .....	08-11
Tiles .....	12-15
Woods .....	16-19
Stone .....	20-23
Texture Paint .....	24-27
Green .....	28-29
Shading .....	30-35
Outdoor Furniture .....	36-39
Planters & Decor .....	40-43
Windows & Railing .....	44-47
What We Do .....	48
Design Consultancy .....	49
Our Clients .....	50



## ABOUT US

**About Us:** Designer Home & Landscapes is the perfect one-stop solution for Bathrooms, Surfaces, and Landscaping so that our home and working space reflect that perfect uniqueness. Our eclectic collection from all corners of the globe offers our buyers exquisite, innovative, and quality products.

### **Our Journey:**

The first store of Designer Home & Landscapes was founded in the year 2006 with a focus on bathroom and tiles. 2009 saw Designer Surfaces launching to focus on Wood and Stones. In 2011, Designer Landscapes was founded for terraces and gardens. 2015 saw the Delhi store launched to cater to North Indian markets. Finally, in 2017, the Landscape Design segment of the store came to provide end-to-end products and services. In 2021 we introduced system aluminium windows and texture paint.

### **Our Partner Brands :**

Apart from 5 showrooms in Kolkata & New Delhi, our presence in East and North India lies through our channel partners. We represent leading brands like Kohler, Weavecrafts, Weathertex, World of Stones, Stonecrete, Tempesta, Unistone, Restile, Nexion, Supergrass and many others from East & North India. Currently, we have 5 stores across 30,000 sq ft of retail space.

### **Our Team :**

Designer Home & Landscapes was founded by Mr. Rohit Sarda, who did his post-graduation from the Indian Institute of Management, Bangalore, and worked for 5 years in Sales & Marketing. Our diverse team consists of MBAs, landscape designers, civil engineers, supervisors, and various sales & marketing managers and executives having a vast array of experience between them. Our entire team works with the common philosophy of delighting customers with innovative products and a world-class experience.







## MISSION & VISION

Our Vision is that people spend quality time outdoors. Our motto is “Love Outdoors, Live Outdoors!” With rapid urbanization and shortage of space, people need a place where they can experience fresh air and get a peaceful time. (without air-conditioners, televisions, computers and mobiles). It is crucial that people spend some quality time with their family and friends, cuddle their children, rekindle the romance, reconnect with their loved ones and spend some time with themselves.

The lockdown and restricted movement last year increasingly highlighted the importance of the balcony, terraces, and gardens as they became multi-purpose spaces to connect with the outdoor lifestyle. However, for quality time, we need to have quality outdoors that makes one feel good about being there. Outdoors are often the most neglected part of any house and are used mainly for drying clothes or storing unwanted household items. Also, outdoor has the harshest climatic conditions with sun, rain, winds, and birds causing faster wear and tear to materials. Thus people put cost-effective materials without bothering about quality, aesthetics, or durability. Due to this cycle in play, there are hardly any options for quality outdoor products. The experience of making quality outdoors is a harrowing one as people are devoid of full range displays, quality products, sound advice, and prompt services. Facades are an integral part of the building and only 1% of people who see the facade would see what is put inside the building. Well-designed Facades increase the life of the building, reduce energy consumption and save the recurring maintenance cost. People depend mainly upon unorganized contractors where there is a huge discrepancy in what they promise and deliver, and eventually the outcome in a couple of years. Our mission is to understand the needs of our customers deeply and passionately in order to provide innovative, unique solutions to make their experience memorable. We strive to build lasting relationships and set new benchmarks for growth. We want to Transform Outdoors & thereby Transform Lifestyles.

## BRAND & QUALITY

Sorry, we refuse to compromise on quality. We understand that in the long term, only good quality products last. The need for quality becomes important when it comes to outdoors as the wear and tear are much more. There are the factors that affect outdoor products.

### These are:



Sun: The UV rays of the sun is harsh and can discolour and disfigure any object kept outdoors for a prolonged period. All products we acquire are UV resistant and age gracefully with time.



Rain: All our products are waterproof and can withstand ravages by water. An indoor product can get bent, cracked, softened, and chipped if they are not waterproof. We take great precautions in getting waterproof products.



Wind: Strong winds can blow away shades, light-weight outdoor furniture & planters. Our shading systems like gazebos, pergolas, and umbrellas come with the guarantee to withstand strong winds.

















# BRAND & QUALITY



## OUR BRANDS

WOOD			
STONE			
SHADING			
FURNITURE			
DECOR			
TILES			
BATHROOM			
WINDOWS & RAILING			
PAINT & CEILINGS			

# BATHROOMS



FAUCETS STELLAR



# BATHROOMS



HANS GROHE TAP



GROHE FAUCETS



KOHLER SUITE



MICRO-CONCRETE WASH BASIN



KOHLER TAPS

# BATHROOMS



RAIN SHOWER



# BATHROOMS



CUSTOMISED ENCLOSURE WITH STEAM



LED MIRRORS



SHAVING MIRRORS



WHIRLPOOL





# TILES







# TILES



# WOODS



SPC



# WOODS



ENGINEERED WOOD



WEATHERTEX CEILING



LAMINATE WOOD



SOLID WOOD



NATURA





IPE DECKING



# WOODS



VOX CLADDING



WPC DECKING



WEATHERTEX CLADDING



SCREEN









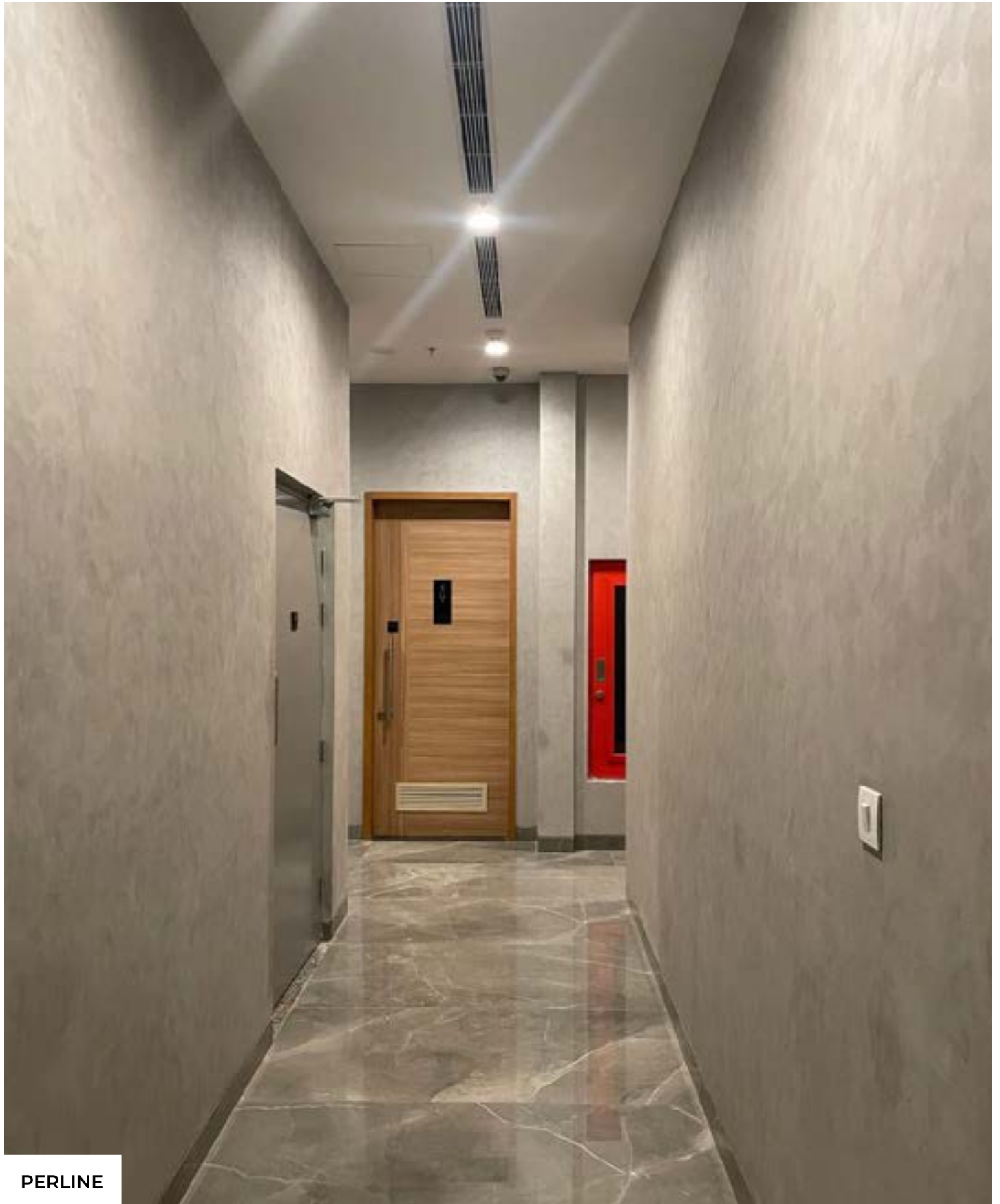






# STONE





PERLINE



# TEXTURE PAINT



MUGHL - E - AZAM



POLISHED PLASTER



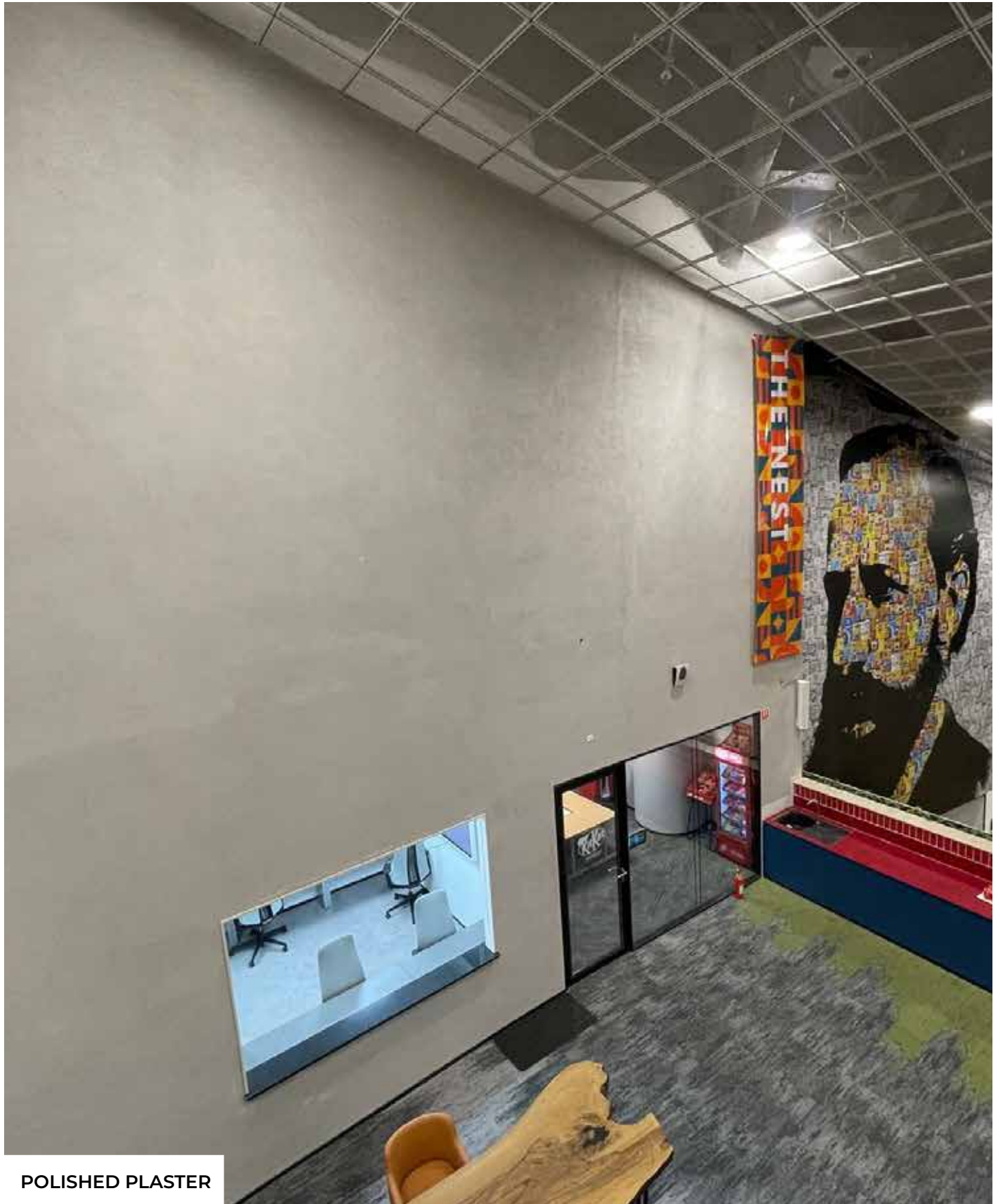
CONCRETE



CONCRETE



PEARLASTO



POLISHED PLASTER



# TEXTURE PAINT







GREEN WALL



GREEN WALL



GREEN WALL





ARTIFICIAL VERTICAL GARDEN



LANDSCAPING TURF



REAL VERTICAL GARDEN



NATURAL PLANTS

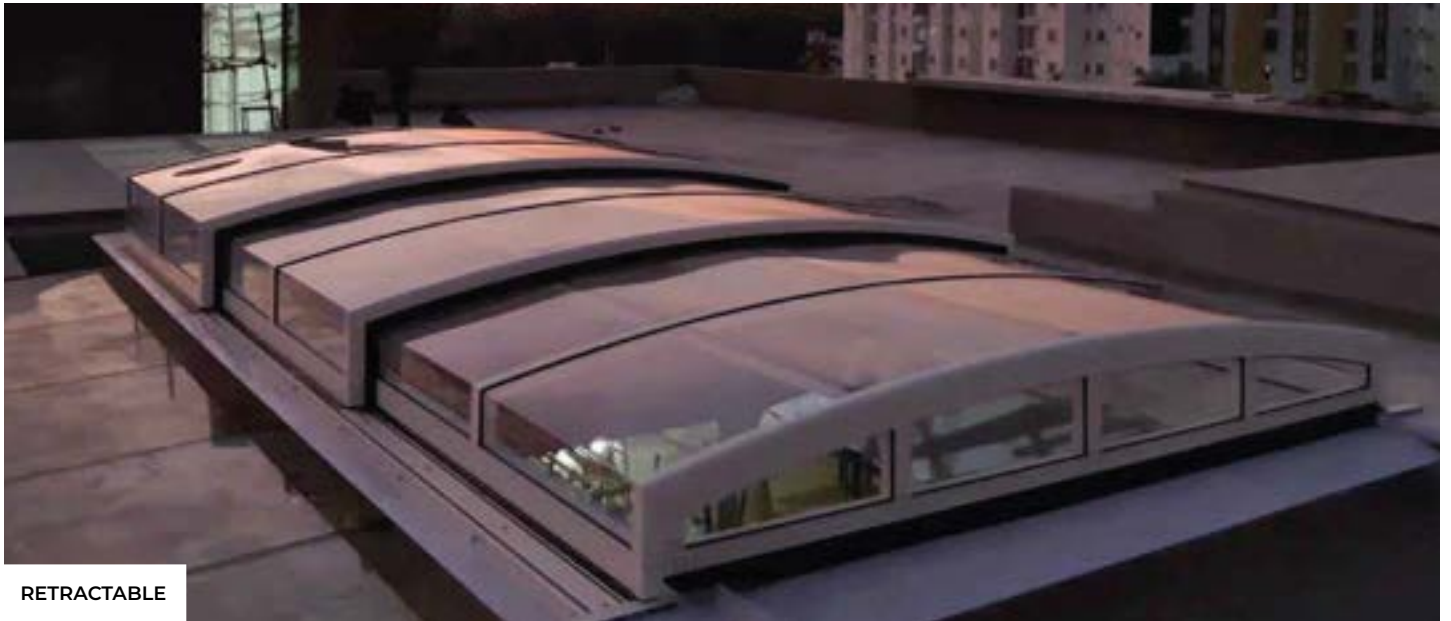




PERGOLA



# SHADING





DOME



# SHADING







GLASS HOUSE



# SHADING



MULTI UMBRELLA



MULTILAYERED UMBRELLAS



LUNAR AWNING



NIBULA AWNING



TWO LAYERED GARDEN AND POOLSIDE UMBRELLAS

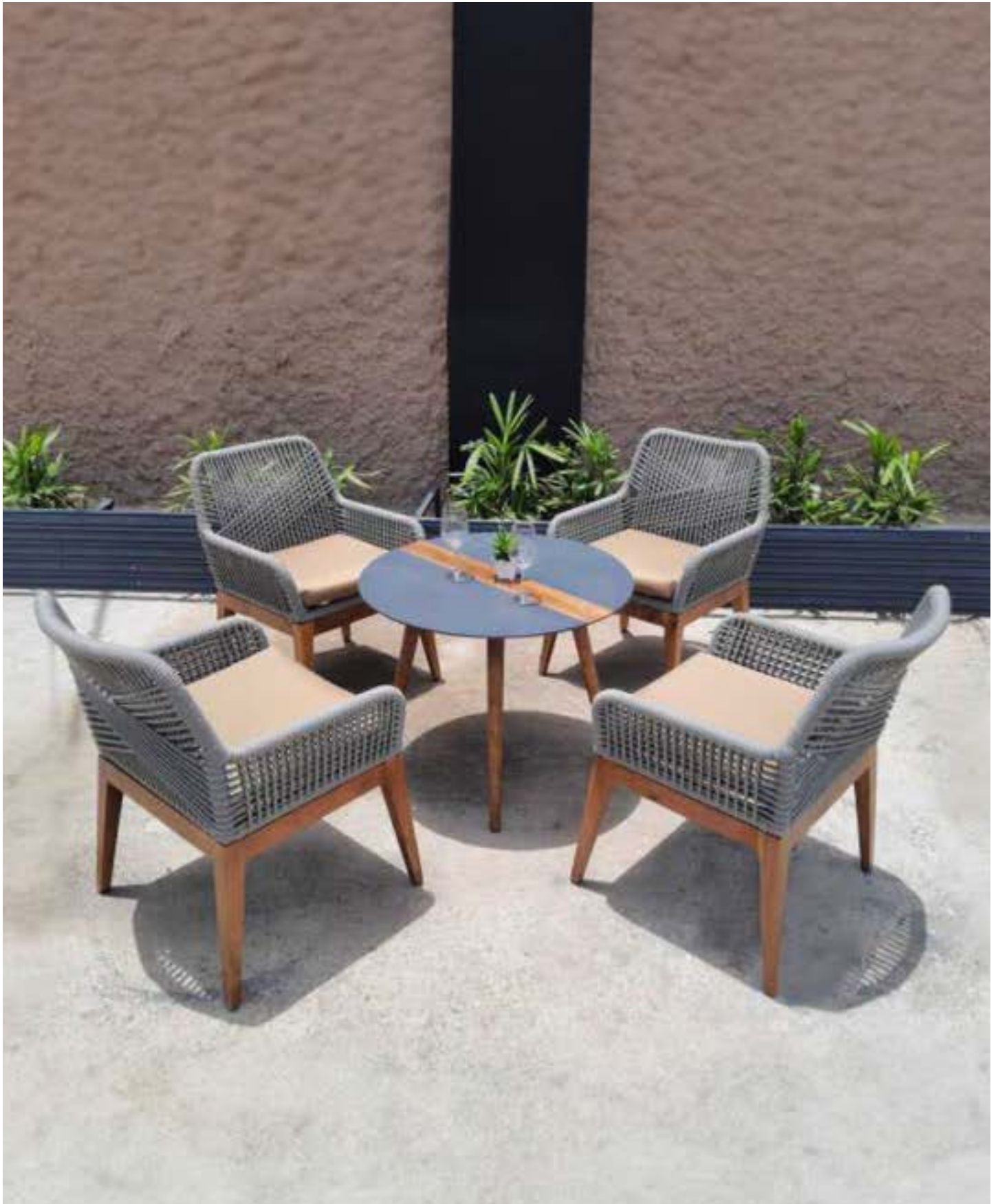






# OUTDOOR FURNITURE







# OUTDOOR FURNITURE





PLANTERS





GRC PLANTERS



LED PLANTERS



GRC PLANTERS



GRC PLANTERS



MATRIX PLANTERS



TABLE TOP ACCENT



# PLANTERS & DECORS



PLANTER DECOR



DECOR



WALL ART



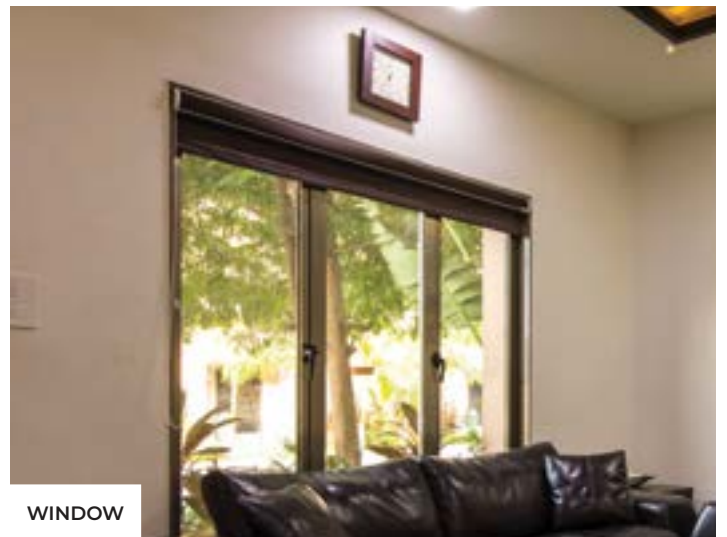
DECOR

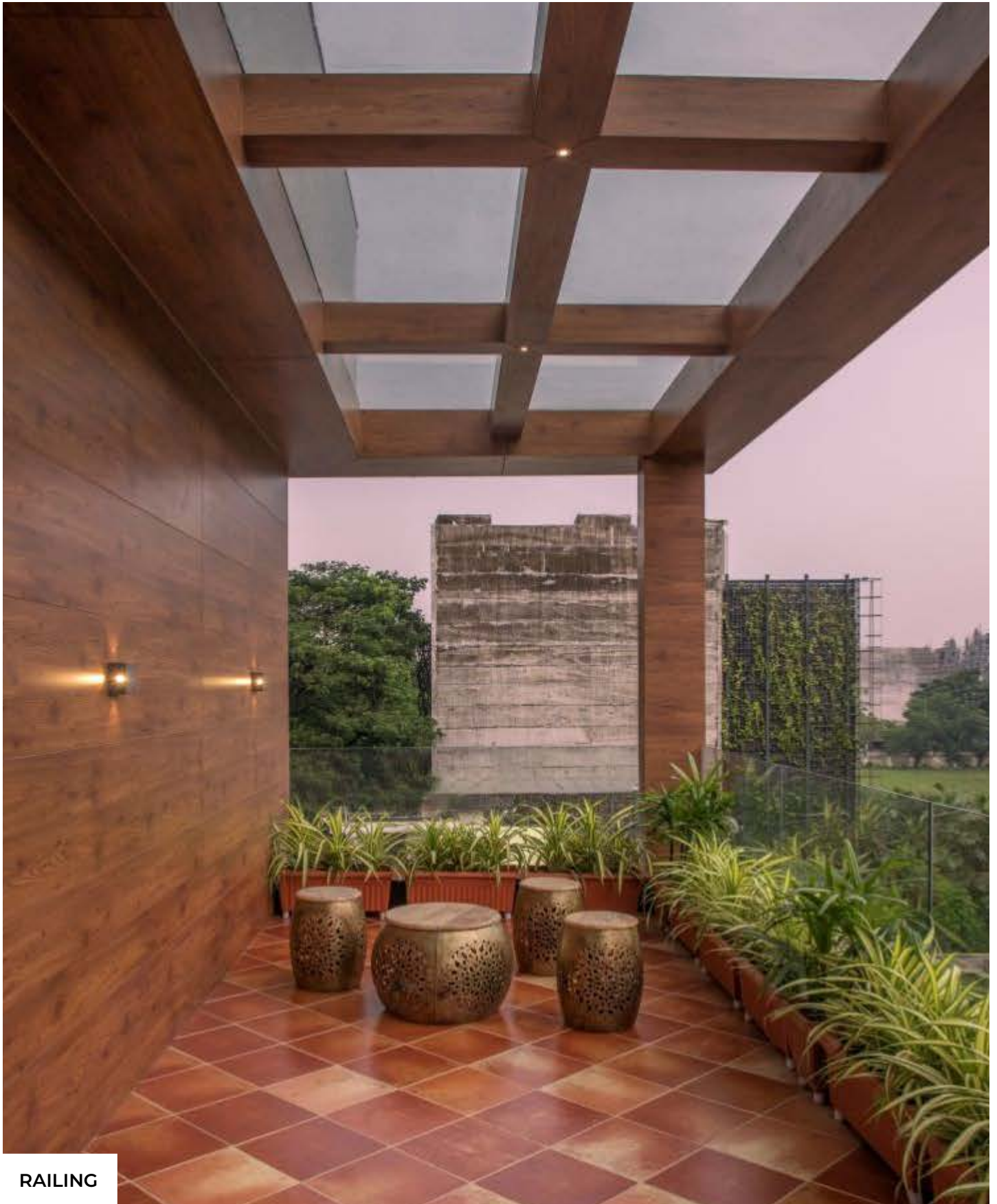


SLIDING WINDOW



# WINDOWS & RAILING





RAILING



# WINDOWS & RAILING



RAILING



RAILING



RAILING



RAILING

## WHAT WE DO

- Designing for terraces, gardens, balconies, driveways, facades & boundary walls
- Supply of all hardscape (wood/ stone/ tile + shading + furniture + planters) and softscape materials with warranty
- Supervision of site with strict adherence to timeline
- Execution of glass house, pergolas, decking, facade cladding and fencing work
- Maintenance of softscape and hardscape oiling and sealers



**LOVE OUTDOOR, LIVE OUTDOOR.**



# DESIGN CONSULTANCY

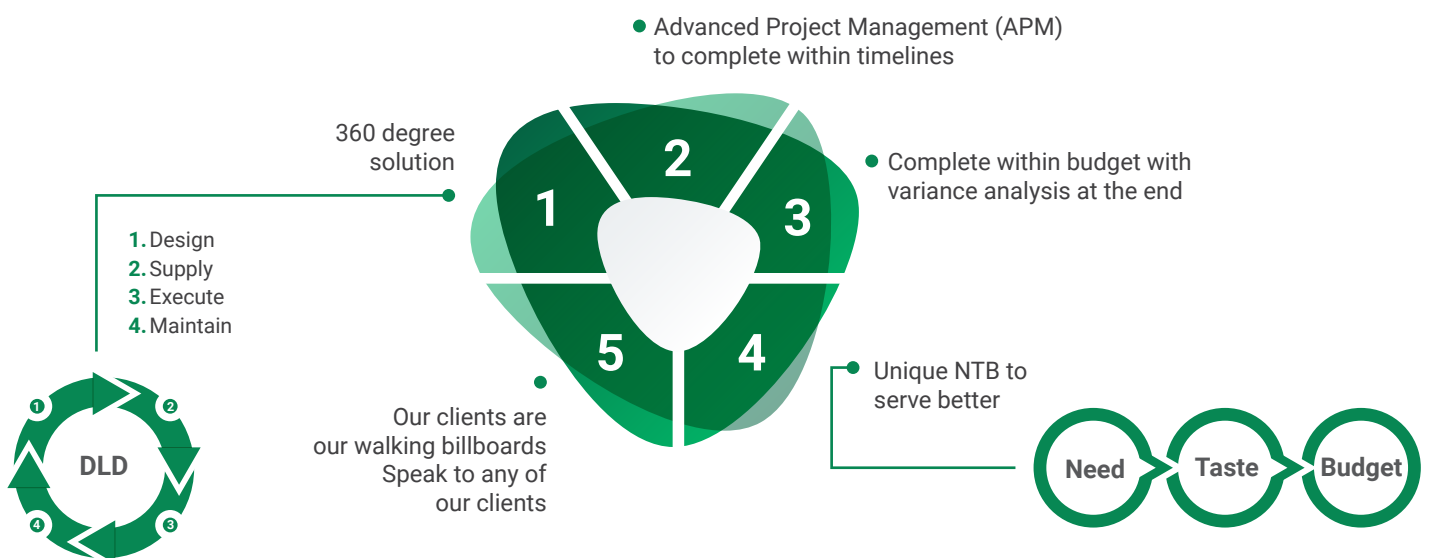
Specially designed for landscaping requirements, we offer a 360° solution ranging from design, proper material supply with warranty, site supervision, execution and maintenance. We are extremely gratified that we have completed 1000+ projects till now, collaborating with the best in business.

## HOW WE WORK

We understand clients' need to showcase what & how we do in detail with a rough BOQ and budgetary estimate to get a confirmation for designing. Upon confirmation, we make 2 design options for our clients to finalize the design and select the products. We submit final quotes and confirm detailed layouts for the project handover process. Our timely submission of work within the committed deadline to deliver the best is what makes us one of the best in business.

## WHY US

Our clients are our walking billboards, all our clients testify regarding our ability to complete within budget adhering to the NTB (Need, Taste, Budget). Not only our advanced project management methods are the key to completing within timelines but we also take care of the best quality assurance during and post-delivery.



# OUR CLIENTS

## HOTELS & CLUBS



## CAFES & RESTAURANTS



## PROJECTS







[instagram.com/designerhomeandlandscapes](https://www.instagram.com/designerhomeandlandscapes)

[www.designergroup.in](http://www.designergroup.in) | Call : +91 6292320069

## **DESIGNER** **HOME & LANDSCAPES**

### **SALT LAKE**

SLS TOWER 8TH & 9TH FLOOR F-1 GP BLOCK, SECTOR-V,  
KOLKATA - 700091

### **ELGIN ROAD**

38B, ELGIN ROAD OPP FORUM, KOLKATA 700020

### **SHAKESPEARE SARANI**

28/2 SHAKESPEARE SARANI, KOLKATA-700017

### **RASBEHARI AVENUE**

145 RASBEHARI AVENUE, SPENCERS MALL,  
KOLKATA 700029

### **BHUBANESWAR**

2ND FLOOR, OCHC COMPLEX, BLOCK III, NEAR RAM MANDIR,  
JANPATH, BHUBANESWAR - 751001

### **NEW DELHI**

146 NEW MANGALPURI, MG ROAD, NEW DELHI - 110030